



FRICTION

Bremskerl is a **family owned** business founded in 1929 in Nienburg, Germany and currently employs over **350** people worldwide. We have manufacturing & distribution facilities in **5 countries**, including an over **250,000** square foot manufacturing facility in Estorf, Germany. Our core business includes manufacturing **asbestos-free organic brake** and **clutch friction materials** for the following markets:



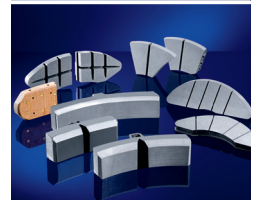
Industrial

Flexible molded and woven band; hot and cold pressed finished & semi-manufactured articles; e.g. rings, blocks, sheets.



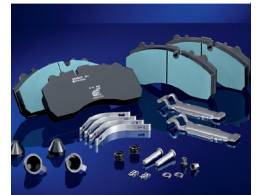
Railway Systems

Brake Pads and Brake Blocks for transit and freight rail systems.



Commercial Vehicles

Drum brake and disc brake pads for trucks, trailers, busses, cranes and specialty vehicles.



BREMSKERL

The Specialist
for Brake
and Clutch
Linings





Material Offerings

- Over 150 formulations with friction coefficients of .10μ - .60μ
- All materials are 100% non-asbestos
- RoHS, REACH and GADSL Compliance
- Hot pressed, cold pressed and roll formed materials
- Sintered replacement materials for high energy applications
- Cork replacement materials

Quality Control

- ISO 9001:2008
- IRIS Rev. 2
- ISO 14000 and TS16949 planned
- Highly automated mixing systems with full lot traceability
- CPK
- PPAP

Research & Development

- 2 full-scale dynamometers with environmental chambers to test products in wet/snow/ice conditions for rail and commercial vehicle product development
- 4 small scale testing rigs
- Customer specific testing rigs
- Chemical and mechanical property testing including EDX and GC analysis

Manufacturing Capabilities

- Integrally molding
- Overmoulding
- Bonding
- Stamping
- Grinding
- Grooving
- Milling
- Waterjet Cutting
- And Others

Strengths

- Meeting Highest Safety Standards
- Competitively Priced
- Technical Solutions & Advancement
- Usage of new raw materials
- Reducing specific wear rates
- Increasing thermal stability
- Minimizing smell
- Life Cycle Cost Reduction
- Environmentally Friendly Products & Production

BREMSKERL

The Specialist
for Brake
and Clutch
Linings

